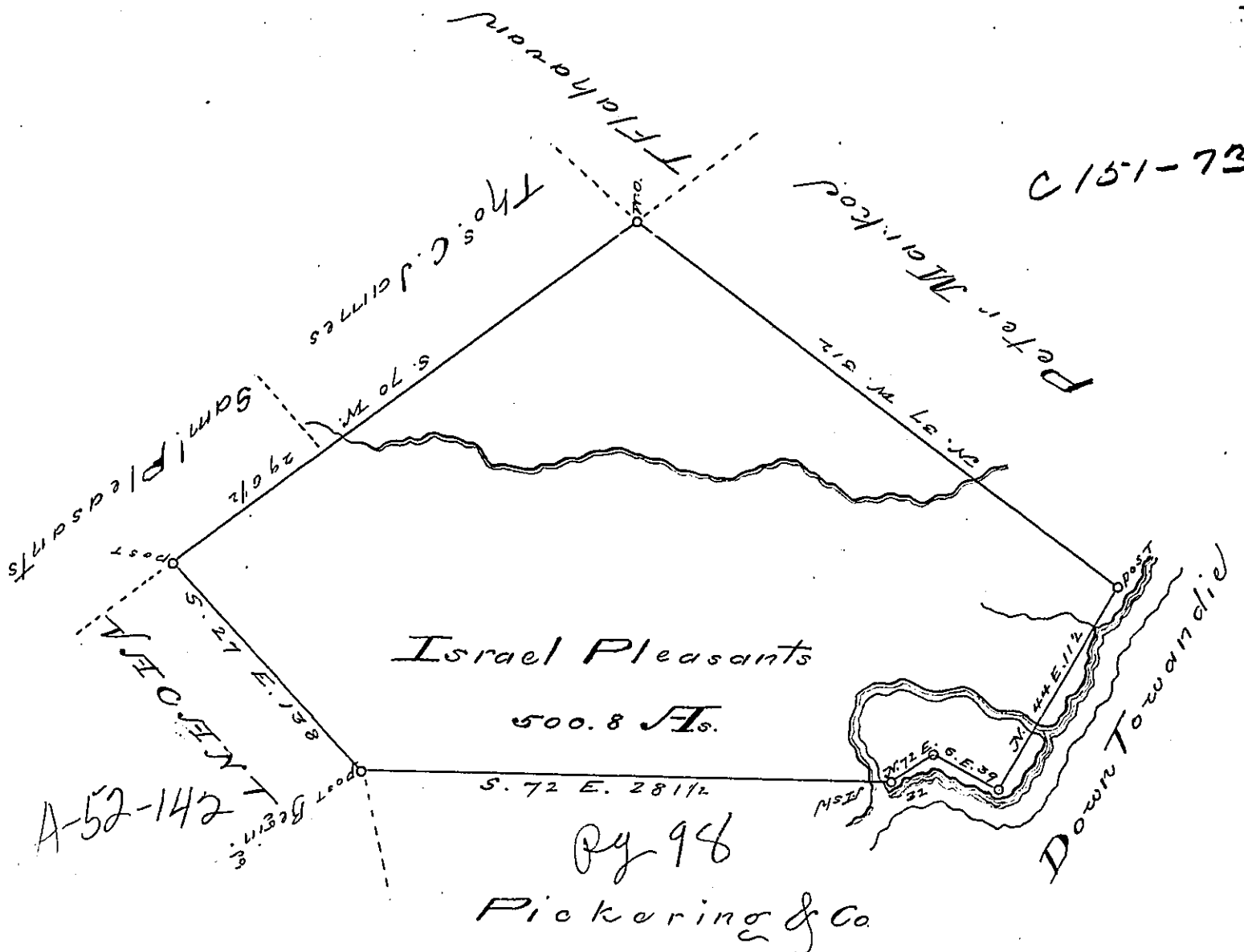


C 151-73



The Draught of a Tract of land called
 Situate on the North side of Towardie, about 2
 Miles up the same in the County of Northumb.
 Contain 500.8 A. 35 P. & Allow.

Survey'd 12th July 1785. In Pursuance of a
 Warrant to Israel Pleasants dated 7th May 1785
 No 489.

John Lukens Esq. Surv. Genl. Sign'd.
 A True Copy M^{rs} MacLay D.S.
 Certified this 12th January 1788
 for John Lukens Esq. J.
 Edw^d Lynch

IN TESTIMONY that the above is a copy of the original remaining on file in the
 Department of Internal Affairs of Pennsylvania, made con-
 formably to an Act of Assembly approved the 16th day of
 February, 1833, I have hereunto set my Hand and caused
 the Seal of said Department to be affixed at Harrisburg, this

— twentieth — day of — February — 1895.

Isaac B. Brown
 Secretary of Internal Affairs.